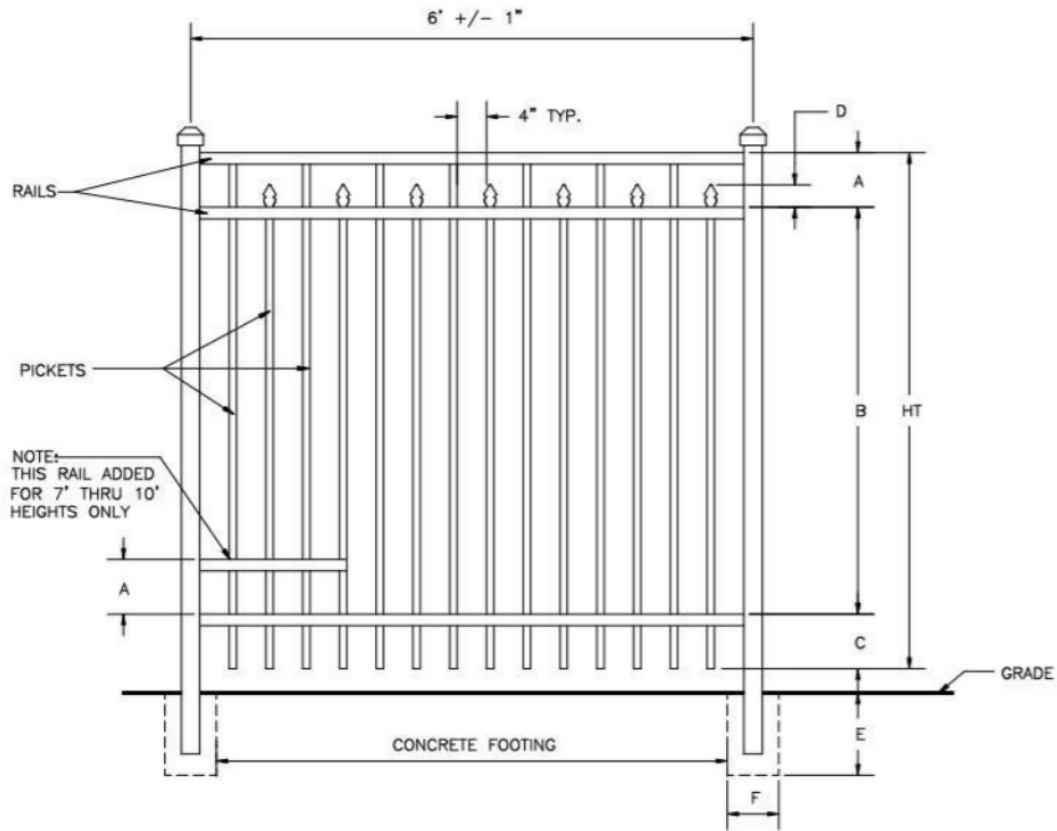


## Industrial Aluminum Fence Panel Flat Top with Spear



SPECIFICATIONS INDUSTRIAL	
POSTS	2 1/2"x2 1/2"x.100 WALL 3"x3"x.125 WALL 4"x4"x.125 WALL
HORIZONTAL RAILS ENCLOSED BOTTOM SIDE WALLS TOP WALLS	1 5/8" x 1 5/8" AVAILABLE .100" .070"
PICKETS PICKET SPACING	1"x1"x.062 WALL 4"
AVAILABLE HEIGHTS	4, 5, 6, 7, 8, 9 & 10 FT.
AVAILABLE WIDTHS	6, 7, 8 & 9 FT.

DIMENSIONS						
HT	A	B	C	D	E	F
4'	7 5/8"	32 3/4"	7 5/8"	3 1/8"	PER LOCAL CODE	
5'	7 5/8"	44 3/4"	7 5/8"	3 1/8"	PER LOCAL CODE	
6'	7 5/8"	56 3/4"	7 5/8"	3 1/8"	PER LOCAL CODE	
7'	10 5/8"	62 3/4"	10 5/8"	3 1/8"	PER LOCAL CODE	
8'	10 5/8"	74 3/4"	10 5/8"	3 1/8"	PER LOCAL CODE	
9'	13 5/8"	80 3/4"	13 5/8"	3 1/8"	PER LOCAL CODE	
10'	13 5/8"	92 3/4"	13 5/8"	3 1/8"	PER LOCAL CODE	